

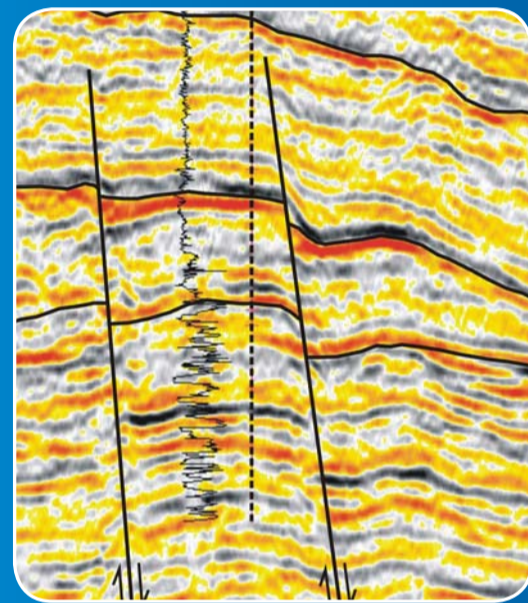
# CO2CRC

## — An emission free vision for the future

Researching and developing technologies for carbon dioxide capture and geological storage



Demonstrating the practical application of carbon dioxide capture and storage technologies to reduce carbon dioxide emissions



Assessing the scope for the application of CCS in a range of different geographical, technical, and commercial settings in Australia, New Zealand, and internationally

Participating in international programs and collaborating with leading researchers and research groups globally



Transferring technology and developing new commercial opportunities based on CO2CRC intellectual property through CO2CRC Technologies (CO2TECH)



Providing excellent education and training in greenhouse gas technologies



The Cooperative Research Centre for Greenhouse Gas Technologies (CO2CRC) is one of the world's leading collaborative research organisations focused on carbon dioxide (CO<sub>2</sub>) capture and geological storage (geosequestration).

CO2CRC is an unincorporated joint venture comprising participants from Australian and global industry, universities and other research bodies from Australia and New Zealand, Australian Commonwealth and

State agencies and international government agencies.

CO2CRC was established and is supported under the Australian Government's Cooperative Research Centres Programme.